

London Mooring Strategy Consultation Report

June 2018

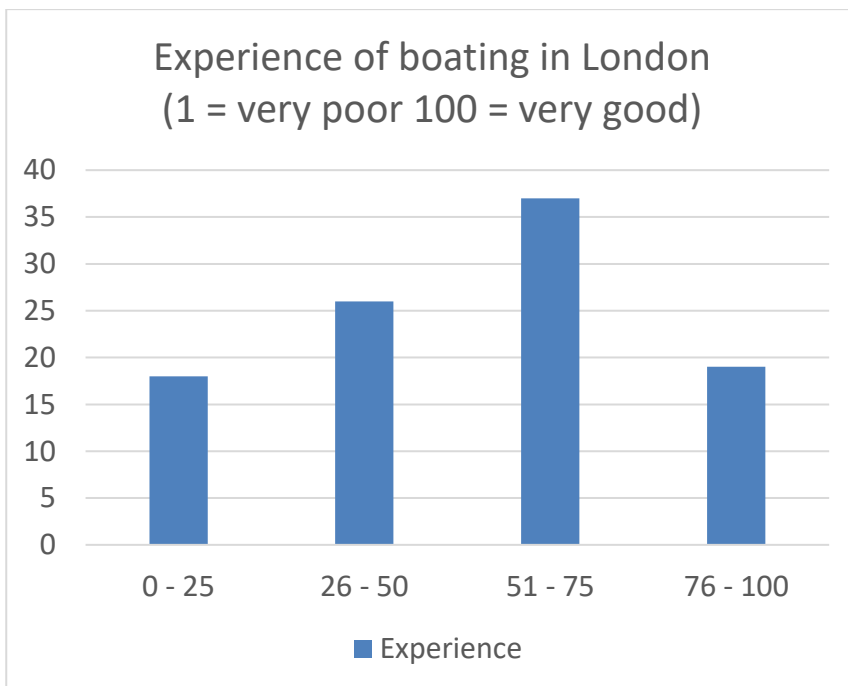
The consultation on the draft London Mooring Strategy ran from 18 October – 18 December 2017. 1239 responses to the consultation were received (1229 by e-survey and 10 by paper responses).

Q1. Participants were asked if they had read the draft strategy already

90% (1115) had read the draft strategy

10% (124) said they had not yet read the draft strategy – they were provided with a link to read the strategy before completing the survey

Q2. Using a sliding scale from 1 to 100 (1 = very poor experience and 100 = very good experience) participants were asked to rate their current experience of boating in London? (913 responded)



The average score was 53 out of 100.

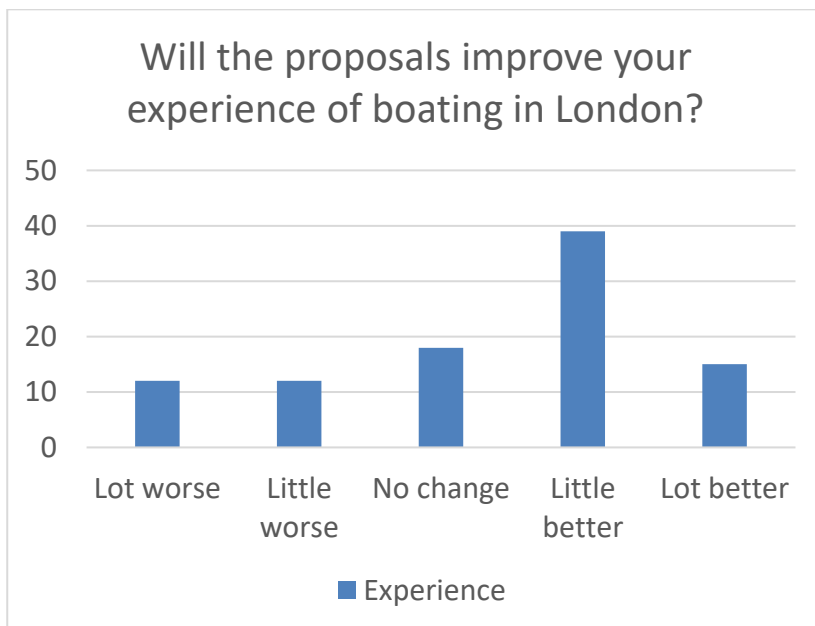
18% (162) gave a score of 25 or below

26% (236) gave a score of between 26 – 50

37% (336) gave a score of between 51 – 75

19% (179) gave a score of between 76 – 100

Q3. Participants were asked to what extent do you think the proposals overall in the strategy will help improve your experience of boating in London?
 (963 responded)



15% (149) said they thought it would help improve their experience of boating in London a lot
 39% (371) said they thought it would help improve their experience of boating in London a little
 18% (178) said they thought it would make no difference to their experience of boating in London
 12% (117) said they thought it would make their experience of boating in London a little worse
 12% (115) said they thought it would make their experience of boating in London a lot worse
 3% (33) said they had no view or were not boaters

Q4. Why you answered Q3 as you did.
 (750 responded)

Of those who thought the proposals would improve their experience, reasons for this response included:

- New and improved boater facilities (168)
- More and better managed short-stay visitor moorings (165)
- Better management and enforcement (59)
- The creation of new long-term moorings (58)
- More pre-bookable visitor moorings (49)

Of those who thought the proposals would make their experience worse, reasons for this response included:

- Concern about / oppose loss of 14 day mooring (103)
- Too many boats in central London/lack of congestion control / demand vs supply (73)
- Proposals make boating in London less affordable / need low cost long-term moorings (25)
- Concerns strategy is too focused on making money / privatizing the canal (25)
- More online mooring will slow down boat passage (15)

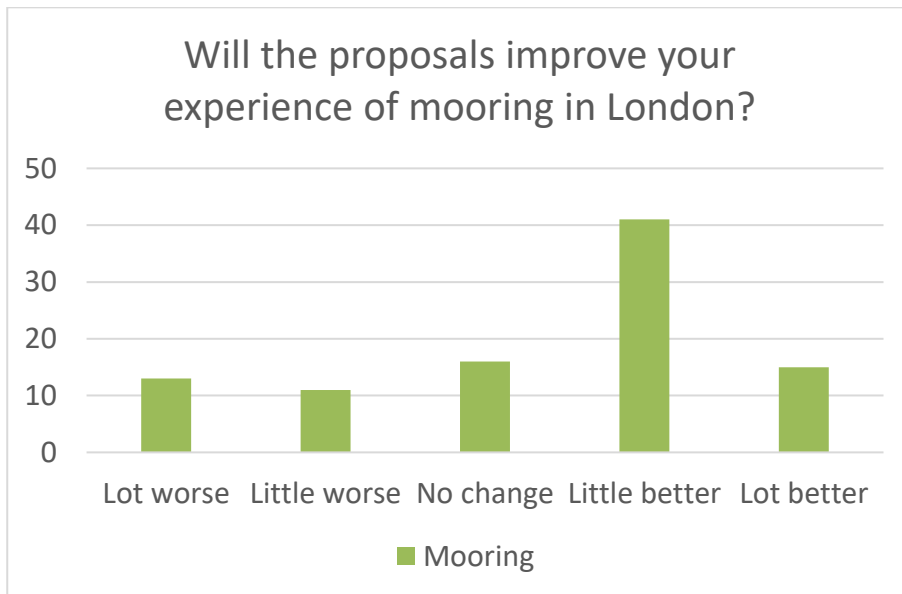
Q5. Using a scale from 1 to 100 (1 = very unsatisfied and 100 = very satisfied) participants were asked to indicate how satisfied they are with mooring in London at present? (816 responded)



The average score was 45 out of 100.

- 29% (236) gave a score of 25 or below
- 30% (244) gave a score of between 26 – 50
- 25% (206) gave a score of between 51 – 75
- 16% (130) gave a score of between 76 – 100

Q6. Participants were asked to what extent do you think the proposals in the strategy will help improve mooring in London?
(906 responded)



15% (134) said they thought it would help improve mooring in London a lot
41% (370) said they thought it would help improve mooring in London a little
16% (143) said they thought it would make no difference to mooring in London
11% (100) said they thought it would make mooring in London a little worse
13% (120) said they thought it would make mooring in London a lot worse
4% (39) said they had no view or didn't know

Q7. Why you answered Q6 as you did.
(623 responded)

Of those who thought the proposals would improve mooring, reasons for this response included:

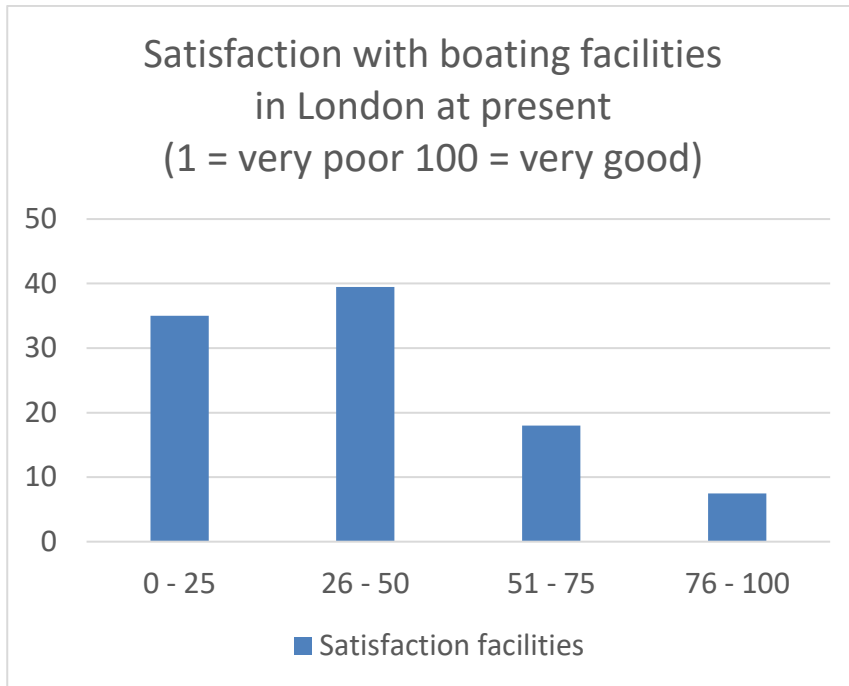
- Welcome more short-stay visitor moorings/ better managed/ability to visit/move across London (73)
- Welcome more long-term moorings (47)
- Welcome improved 14 day mooring / additional mooring rings / need more 14 day mooring (40)
- Proposals will improve mooring situation (31)
- Welcome pre-book moorings (21)
- Proposals will help reduce congestion / improve ease of navigation (10)

Of those who thought the proposals would make mooring worse, reasons for this response included:

- Moorings proposals will make it harder for CC boaters / need to support CC (49)
- Oppose loss of 14 day moorings (41)
- Need to reduce the number of boats in London to solve mooring problem (34)

- Proposals will just lead to more boats coming to London (31)
- Expect costs will rise for boaters /proposals will only benefit those with money (26)
- 48 hour /7 day short stay mooring too restrictive / will require more frequent movement (25)

Q8. Using a scale from 1 to 100 (1 = very unsatisfied and 100 = very satisfied) participants were asked to indicate how satisfied you are with boating facilities in London at present? (768 responded)



The average score was 38 out of 100.

- 35% (270) gave a score of 25 or below
- 39.5% (303) gave a score of between 26 – 50
- 18% (137) gave a score of between 51 – 75
- 7.5% (58) gave a score of between 76 – 100

Q9. Participants were asked to what extent do you think the proposals in the strategy will help improve facilities in London? (e.g. boater rubbish disposal, sanitation and drinking water facilities).

(878 responded)



27% (237) said they thought it would help improve facilities in London a lot
 50% (441) said they thought it would help improve facilities in London a little
 13% (116) said they thought it would make no difference to facilities in London
 2% (19) said they thought it would make facilities in London a little worse
 4% (31) said they thought it would make facilities in London a lot worse
 4% (34) said they had no view or didn't know

Q10. Why you answered Q9 as you did.

(609 responded)

Of those who thought the proposals would improve facilities, reasons for this response included:

- Welcome proposed additional facilities / will make a positive difference (162)
- More water points would be good and will reduce queing (89)
- More and better designed Elsans needed (49)
- Better recycling facilities for boaters needed (38)
- More pump out facilities needed (31)

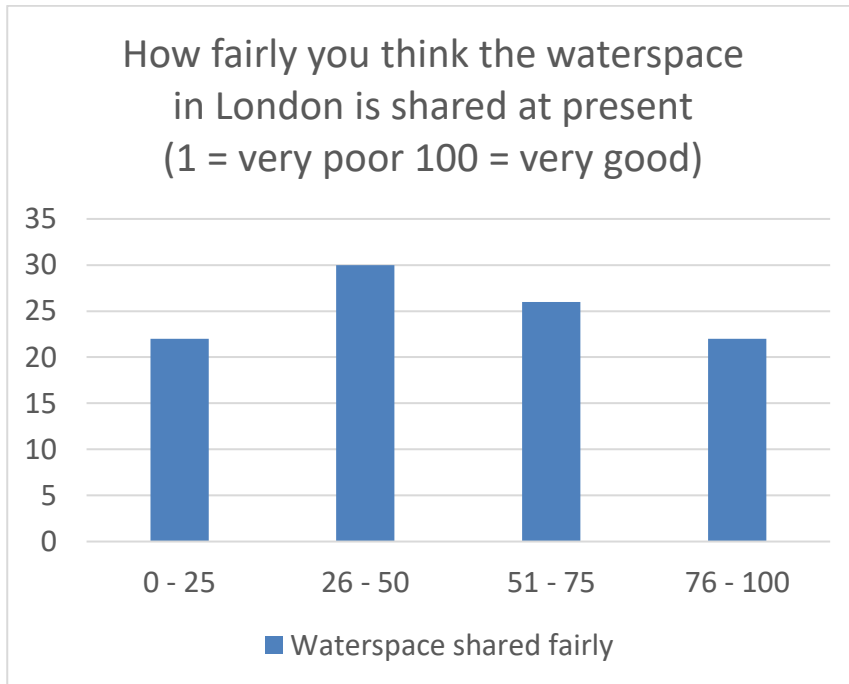
Of those who thought the proposal would make facilities worse, reasons for this response included:

- More dedicated boater refuse facilities needed/more refuse facilities needed (95)
- Existing facilities are inadequate / too far apart / insufficient for number of boats using them (53)
- Proposed new facilities are still not enough / won't keep up with continued growth in boat numbers (49)
- Sceptical proposed facilities will be delivered / will be delivered too slowly (37)

- Misuse and vandalism is making maintenance of facilities difficult (23)

Q11. Using a scale from 1 to 100 (1 = very unsatisfied and 100 = very satisfied) participants were asked to indicate how fairly you think the water space is shared between different uses at present?
(755 responded)

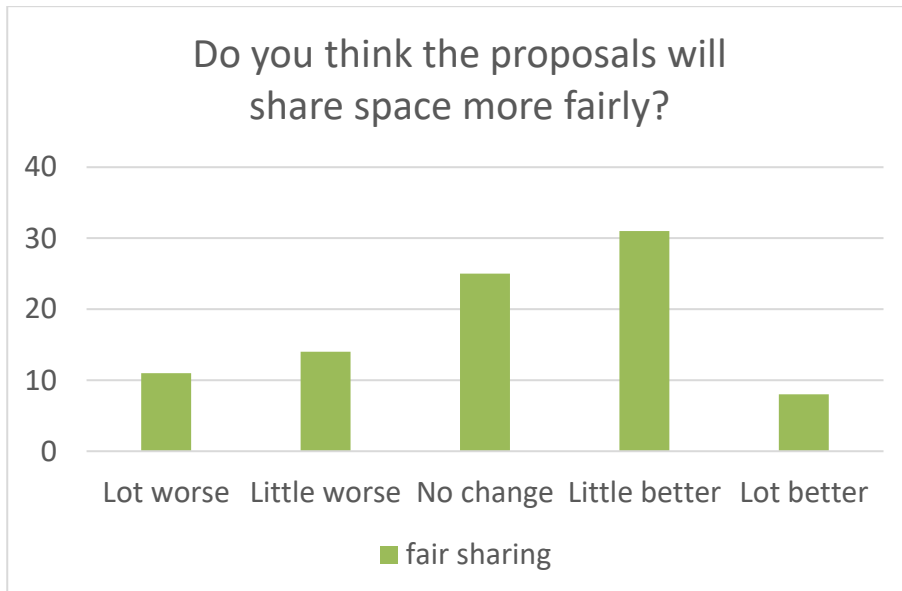
The average score was 50 out of 100.



22% (171) gave a score of 25 or below
30% (220) gave a score of between 26 – 50
26% (201) gave a score of between 51 – 75
22% (163) gave a score of between 76 – 100

Q12. Participants were asked to what extent do you think the proposals in the strategy will help ensure that the water space in London is shared more fairly between different users than it is at present?

(850 responded)



8% (72) said they thought it would help ensure water space in London is shared more fairly a lot
31% (266) said they thought it would help ensure water space in London is shared more fairly a little

25% (211) said they thought it would make no difference to how water spaces in London is shared.

14% (116) said they thought it would make sharing of water spaces in London a little worse

11% (90) said they thought it would make sharing of water spaces in London a lot worse

11% (95) said they had no view or didn't know

Q13. Why you answered Q12 as you did.

(506 responded)

Of those who thought the proposals would improve fair sharing, reasons for this response included:

- There is already a fair sharing of the water space between different users (36)
- More short-stay visitor moorings will make it fairer (30)
- The strategy is attempting to be fairer for everyone/ reach a balance (24)
- More mooring space will make it fairer for everyone (17)
- More facilities will make for fairer access to these (13)

Of those who thought the proposals would make fair sharing worse, reasons for this response included:

- More mooring restrictions make it less fair for CC / liveaboard boaters (63)
- More enforcement needed to lead to fairer sharing (51)
- Boat numbers increasing making it harder to share the space fairly (38)

- High number of CC liveboards and poor enforcement make a balanced solution hard (35)
- Paid for moorings are an unfair use of space / unaffordable for many (26)

Q14. Participants were asked in there are there any gaps in the strategy, or Is there anything you would like to see added to the proposals?
(815 responded)

65% (530) yes
35% (285) no

Comments on what people thought were gaps

- Even more facilities (22)
- Create more 14 day places (22)
- Enforce powers against those who break the rules (21)
- A limit on the number of boats in London (12)
- More personal safety measure (i.e. better lighting, crime prevention) (16)

Q15. Participants were asked Is there anything you would like to see changed in the proposals?
(815 responded)

42% (338) yes
58% (477) no

Comments on what people said they would like to see changed

- Remove any loss of 14 day moorings (38)
- Fewer short-stay moorings (30)
- More short-stay mooring (21)
- Stricter enforcement (19)
- Fewer long-term moorings (12)

Q16. Participants were asked to identify what from the draft strategy they would like to see prioritised.
(775 responded)

The following were the top 10 things they would like to see prioritised

1. Improvements to general towpath mooring (14 day) to increase overall capacity and make mooring safer and more convenient (180)
2. Increased monitoring and management of free short-stay visitor moorings (115)
3. Improved facilities (in outer London) – pump-out/elsan facilities (80)
4. Improved facilities (in outer London) – rubbish disposal sites (66)
5. Creation of new long-term offside moorings (45)
6. (=) Creation of new long-term mooring as part of offline developments (38)
6. (=) Improved facilities (in outer London) – water points (38)

6. (=) Improve infrastructure to support low-impact living (e.g. electric charging points, facilities to support composting toilet on boats) (38)
9. The introduction of new additional pre-bookable visitor moorings (chargeable) (37)
10. Pilot new mobile refuse collection in central London (23)

Who completed the survey

A boater with a home mooring (who lives aboard most of the year - the boat is my primary residence)	15% (109)
A boater with a home mooring (who does not live aboard most of the year - the boat is not my primary residence)	28% (200)
A continuous cruiser (who lives aboard most of the year - the boat is my primary residence)	38% (270)
A continuous cruiser (who does not live aboard most of the year - the boat is not my primary residence)	4.5% (33)
A boating organisation, canal society, other group or organisation	1.5% (11)
A business	1.5% (12)
A local resident	3% (21)
Other*	8% (56)

*Most of the 'other' declared themselves to be boaters, but this also included local authorities, other public/private bodies, residents and business

How do you define your gender?

Male	63% (434)
Female	27% (185)
Transgender	0.25% (2)
Prefer not to say	8% (56)
Something else	2% (13)

Optional: How would you define your ethnic group?

WHITE - English/Welsh/Scottish/Northern Irish/British (494)	74.51%
WHITE – Irish	1.96% (13)
WHITE - Eastern European	1% (6)
WHITE - Gypsy or Irish Traveller	1% (6)
WHITE - Mixed European	3.47% (23)
WHITE - Any other White background	6.18% (41)
BLACK/AFRICAN/CARIBBEAN/BLACK BRITISH -African	0.15% (1)
ASIAN OR ASIAN BRITISH – Chinese	0.30% (2)
OTHER ETHNIC GROUP – Arab	0.15% (1)
OTHER ETHNIC GROUP - Any other ethnic group	0.15% (1)
MIXED/MULTIPLE ETHNIC GROUPS - White and Black Caribbean	0.30% (2)
MIXED/MULTIPLE ETHNIC GROUPS - White and Black African	0.15% (1)
MIXED/MULTIPLE ETHNIC GROUPS - White and Asian	0.15% (1)
MIXED/MULTIPLE ETHNIC GROUPS - Any other mixed background	1.06% (7)
Prefer not to say	8.60% (57)
Other	1.06% (7)

